



User Manual:

Solar Spectral Irradiance Meter

SolarSIM-GUV



User information

Spectrafy strongly recommends reading this instruction manual prior to installation and operation of your Solar Spectral Irradiance Meter (SolarSIM-GUV).

If you have any comments about this manual or our products, please send them to:

Spectrafy Inc.
4 Florence St., Suite 204
Ottawa, Ontario, Canada
K2P 0W7
Tel: 1-613-237-2020
info@spectrafy.com
www.spectrafy.com

Spectrafy reserves the right to make modifications to the user manual without prior notice.

Warranty and liability

Spectrafy guarantees that the Solar Spectral Irradiance Meter (SolarSIM-GUV) has been thoroughly tested to ensure that it meets all of the stated specifications. A two year warranty is provided from date of invoice, subject to correct installation and operation. Spectrafy accepts no liability for any loss or damages arising from improper usage of this product.

Contents

Introduction	1
1 Main components	2
1.1 Glass dome	3
1.2 Enclosure	3
1.3 Bandpass filters	3
1.4 Bubble level	3
1.5 Connector	3
1.6 Backplate	3
2 Installation	4
2.1 Contents of delivery	4
2.2 Mechanical installation	4
3 Maintenance	6
3.1 Cleaning	6
3.2 Alignment	6
3.3 Desiccant	6
3.4 Recalibration	6
4 Connectivity	7
4.1 SolarSIM-GUV Communication Box	8
4.2 Serial-over-Ethernet converter	8
4.3 Datalogger	10
5 SolarSIM-GUV DAQ Application	10
5.1 Software installation	10
5.2 Software settings	10
5.3 Using the software	11
5.4 Data type and storage	14
5.5 Changing default language for non-Unicode characters	16
6 Datalogger setup	18
6.1 Serial port configuration	18
6.2 Serial commands	18
6.3 Raw data file format	20
6.4 SolarSG application	21
Appendix: Using the SolarSG Application	22

List of Figures

1	SolarSIM-GUV components and main dimensions.	2
2	Assembled SolarSIM-GUV on a mounting plate.	5
3	Dimensional drawing of a mounting plate.	5
4	The SolarSIM-GUV COMBOX.	7
5	Server configuration for VxComm software.	9
6	Port configuration for VxComm software.	9
7	Installation of the SolarSIM-GUV DAQ software.	10
8	Adjustment of the SolarSIM-GUV DAQ user settings.	11
9	Browsing to the calibration file.	13
10	Selecting multiple calibration files.	13
11	Failing to detect the SolarSIM-GUV.	13
12	Changing and verifying geographic settings.	13
13	SolarSIM-GUV DAQ application	14
14	SolarSIM-GUV daily summary file snippet.	15
15	Clock, Language, and Region settings in the Control Panel.	16
16	Changing the system locale.	16
17	Changing the default language for non-Unicode characters.	17
18	SolarSIM-GUV raw data file snippet.	20
19	Modifying geographic settings for the SolarSG application.	21

List of Tables

1	Wiring guide for the SolarSIM-GUV.	8
2	SolarSIM-GUV DAQ program settings.	12
3	SolarSIM-GUV serial port configuration.	18
4	Processed output example for <code>Nxxxx_E</code> command.	19

Introduction

Dear customer, thank you for purchasing the Solar Spectral Irradiance Meter (SolarSIM-GUV) from Spectrafy. Please become familiar with this instruction manual for a full understanding of the use of your SolarSIM-GUV.

The SolarSIM-GUV brings our SolarSIM technology to bear on the challenge of solar UV measurement. The SolarSIM-GUV uses multi-spectral measurement technology to accurately resolve the solar spectral irradiance over the full UV range. From this, all the UV components, such as erythemal UV, UV-B, UV-A, and UV total, are then precisely extracted. With the SolarSIM-GUV you can obtain all UV measurands in a single, compact device with no moving parts.

If you have any questions, please feel free to contact a Spectrafy representative or e-mail info@spectrafy.com

1 Main components

The side view of SolarSIM-GUV components is shown in Figure 1, which includes

- a glass dome,
- an enclosure,
- bandpass filters,
- bubble level,
- a connector, and
- a backplate.

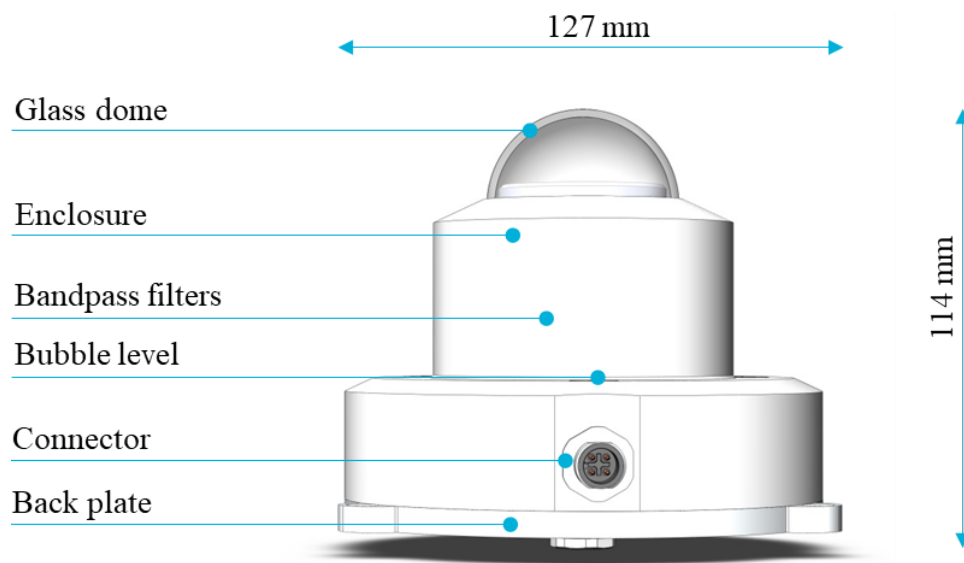


Figure 1: SolarSIM-GUV components and main dimensions.

1.1 Glass dome

The glass dome prevents the ingress of moisture and debris.

1.2 Enclosure

The anodized aluminum enclosure secures SolarSIM-GUV components in place, while providing robust protection from the environment.

1.3 Bandpass filters

Nine hard-coated bandpass filters transmit a narrow band of spectral irradiance to the detectors.

1.4 Bubble level

The bubble level ensures the SolarSIM-GUV is leveled when measuring the irradiance in the global horizontal orientation.

1.5 Connector

The connector provides the power and communication to the SolarSIM-GUV.

1.6 Backplate

The anodized aluminum backplate seals the back of the enclosure with four screws.

2 Installation

2.1 Contents of delivery

Per each ordered SolarSIM-GUV the received package should contain:

- a SolarSIM-GUV $\times 1$,
- a communication cable $\times 1$,
- a SolarSIM-GUV COMBOX $\times 1$ (optional),
- a mounting plate $\times 1$ (optional),
- mounting screws $\times 3$,
- mounting springs $\times 3$, and
- a USB key loaded with the SolarSIM-GUV software.

Please check the contents of the package and note if any damages have occurred during shipment. A claim should be filed with the shipment carrier should this be the case. Additionally, please contact a Spectrafy representative to facilitate the repair or replacement of the instrument and/or its accessories.

2.2 Mechanical installation

The SolarSIM-GUV installation requires fastening it to the mounting plate via three M4 screws and springs, as demonstrated in Figure 2. The mounting plate is 7.3 mm thick and has three slots with a 132 mm diameter that are 4.5 mm wide for external fastening, as shown in Figure 3. The screws for external mounting are not provided. The procedure for mechanical installation is described as follows:

1. Place the SolarSIM-GUV on the mounting plate as per Figure 3.
2. Place the spring under the SolarSIM-GUV so that it roughly aligns with one of the mounting holes on the SolarSIM-GUV.
3. Insert the mounting screw through the SolarSIM-GUV's mounting hole and the spring. Then thread the screw into the mounting plate for a few revolutions, only.
4. Repeat steps 2 and 3 for the remaining two screws and springs.
5. Tighten all screws to compress the springs by about 10 mm.
6. Adjust the mounting screws until the bubble level is centered with the bulls eye.

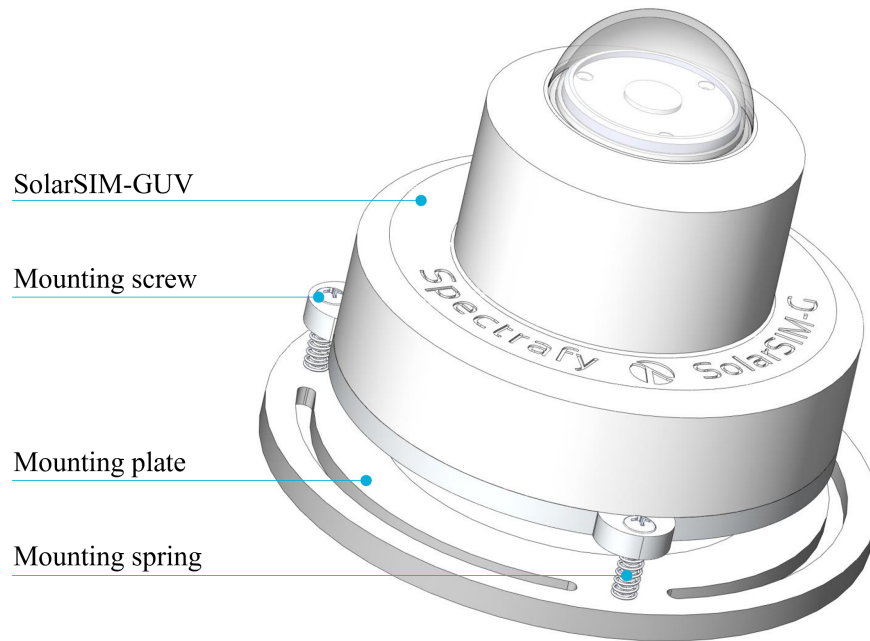


Figure 2: Assembled SolarSIM-GUV on a mounting plate.

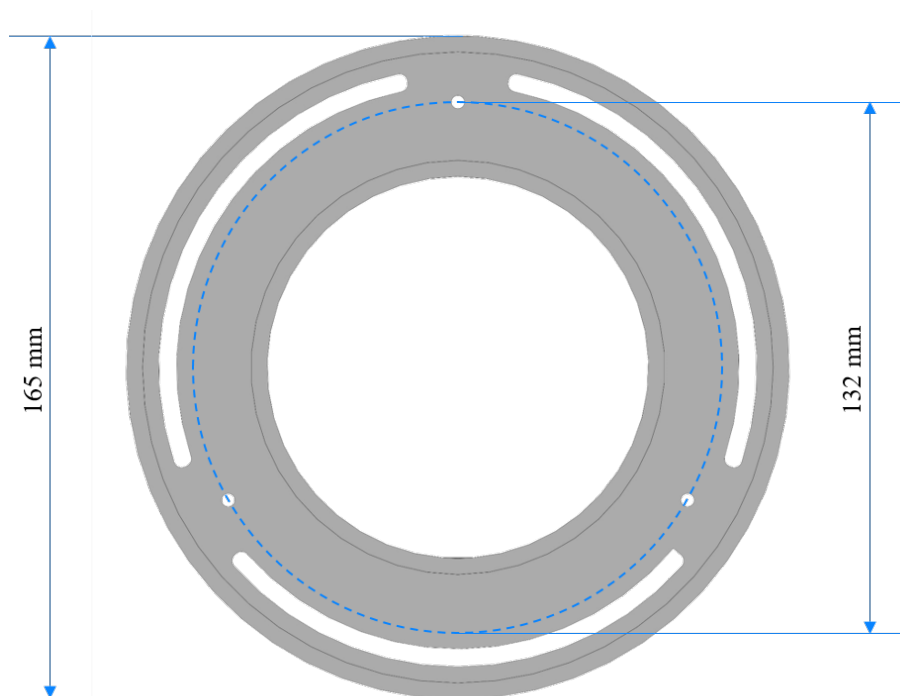


Figure 3: Dimensional drawing of a mounting plate.

3 Maintenance

The SolarSIM-GUV requires very little maintenance. The most important task is to make sure that the glass dome of the SolarSIM-GUV is clean at all times, as the accumulation of dirt can lead to misrepresented data. Furthermore, the horizontal alignment of the SolarSIM-GUV should be checked periodically.

3.1 Cleaning

As a general rule, we recommend cleaning the SolarSIM-GUV's front glass with a dry, non-abrasive cloth, or paper towel, once per week, in order to maintain optimum performance. This frequency can be altered depending on your local climatic conditions.

3.2 Alignment

With each cleaning, it is also advised to check the leveling of the instrument using the bubble level. If the bubble is not centered within the circle, adjust the appropriate mounting screws to re-level the SolarSIM-GUV.

3.3 Desiccant

The desiccant is used to maintain an appropriate humidity level within the SolarSIM-GUV. The internal humidity of the device is reported within the daily summary data files and can therefore be monitored over time. The lifetime of the desiccant is expected to exceed two years, although it may vary based on local climatic conditions. The desiccant can be replaced as part of the SolarSIM-GUV's re-calibration procedure.

3.4 Recalibration

We recommend that the SolarSIM-GUV is returned to Spectrafy for recalibration every 1-2 years in order to maintain the SolarSIM's specified measurement accuracy.

4 Connectivity

The SolarSIM-GUV offers various connectivity options suitable for most use case scenarios. The connectivity solutions include:

1. A SolarSIM COMBOX
2. A serial-over-Ethernet converter, or
3. A datalogger.

Option 1 uses the SolarSIM Communication Box (COMBOX) - a seamless link between a PC and the SolarSIM-GUV, as shown in Figure 4. A standard 6 ft USB cable is connected from the COMBOX to a PC. On the other side, a 10 m RS-485 communication cable is connected from the COMBOX to the SolarSIM-GUV. This option is ideal for test sites and locations where one has the access to a personal computer (PC) or when quick, in-field spectral measurements are necessary with a laptop.

Option 2 allows the user to interface with the SolarSIM-GUV via a serial-over-Ethernet converter, provided there is Internet access. For this option the user must manually connect the power and communication wires to the SolarSIM-GUV by following the wiring guide in Section 4.2. This option is ideal for test sites and locations which have Internet access, but no PC nearby. Both options 1 and 2 make use of the SolarSIM-GUV DAQ graphical user interface, which must be installed on a Windows-based PC or a server, as explained in Section 5.

Option 3 uses a datalogger to acquire raw data from the SolarSIM-GUV. This raw data must be specifically formatted by the user into a .csv file, which is then fed into the SolarSG software to generate the complete SolarSIM-GUV data set, as further detailed to in Section 6.3. This option is ideal for remote test sites and locations with existing datalogger systems.

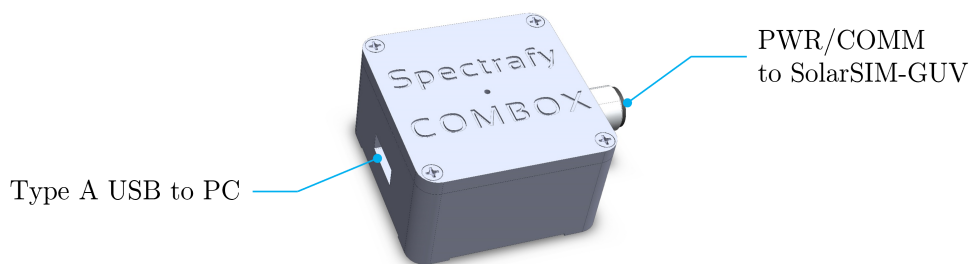


Figure 4: The COMBOX interfaces the SolarSIM-GUV to a PC.

4.1 SolarSIM-GUV Communication Box

The COMBOX is the best option for stable communication between a PC and the SolarSIM-GUV. Please follow these steps to install the COMBOX:

1. Connect one end of the communication cable to the SolarSIM-GUV.
2. Connect the other end to the COMBOX.
3. Connect one end of a male-to-male USB cable to the COMBOX.
4. Connect the other end of a male-to-male USB cable to a PC. A blue LED on the top of the COMBOX indicates power to the SolarSIM-GUV.
5. Wait for the PC to install the FTDI drivers, which may take a few minutes.
6. Once the FTDI drivers are installed, restart the PC.

4.2 Serial-over-Ethernet converter

For remote test site applications the SolarSIM-GUV can be connected to a networked PC via a suitable serial-over-Ethernet (SOE) converter - such as the ICP DAS I-7188-E2¹. The user must connect the SolarSIM-GUV communication cable wires as per Table 1, i.e. the D+ and D- lines, brown and black wires, respectively, must be connected to the corresponding terminal block inputs on the SOE device, while the blue and white wires - to the positive and common ground sides of the 12 VDC power supply, respectively. The SOE converter and the power supply must have a common ground. Note, supplying the SolarSIM-GUV with the voltage higher than 12 VDC will damage the SolarSIM-GUV electronics.

The network must assign a static IP address to the SOE converter. Afterwards, a virtual communication link can be established via the VxComm software². The latter must be configured as per Figures 5 and 6. Once properly configured, the VxComm software creates a virtual serial port on the networked PC, which the SolarSIM-GUV DAQ application uses to communicate to the SolarSIM-GUV.

¹https://www.icpdas-usa.com/i_7188e2.html

²http://ftp.icpdas.com/pub/cd/8000cd/napdos/driver/vxcomm_driver/windows/

Table 1: Wiring guide for the SolarSIM-GUV.

Colour	Label	Function
Blue	V_{in}	Input voltage (+12 VDC)
White	GND	Common ground
Black	D-	Negative RS-485 input
Brown	D+	Positive RS-485 input

*12 VDC only

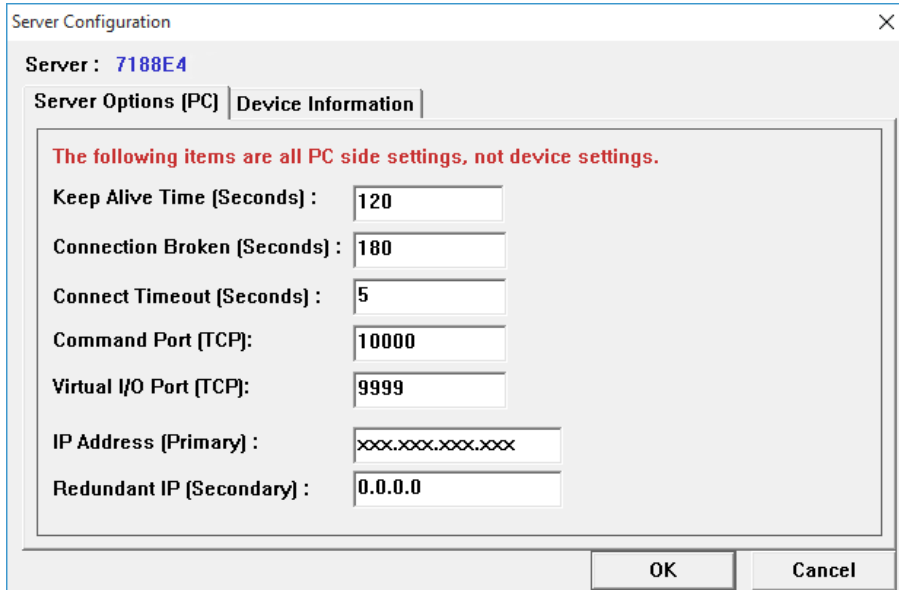


Figure 5: Server configuration for VxComm software. Note, the SolarSIM-GUV supports only the ASCII RS-485 communication mode.

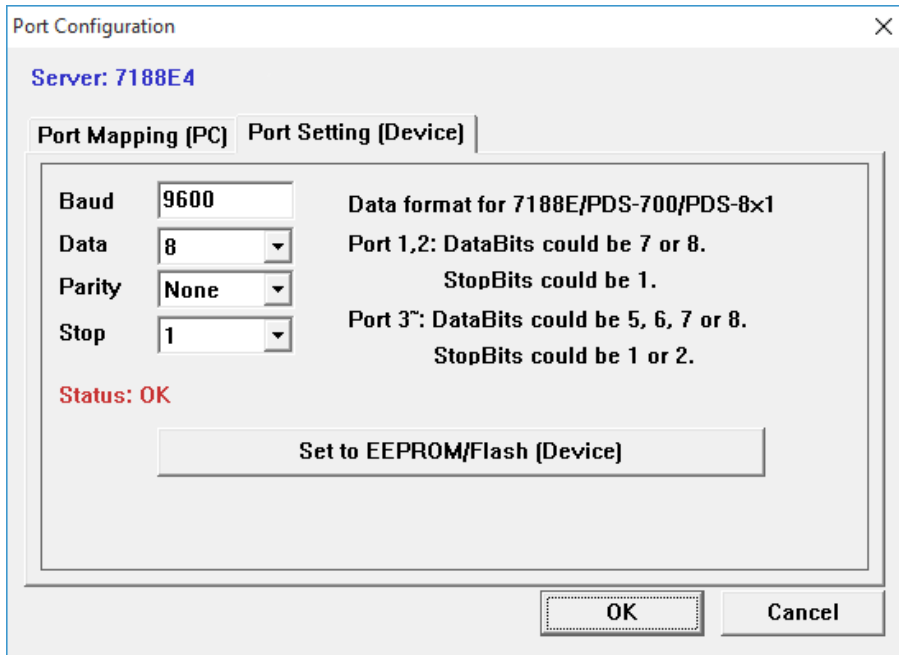


Figure 6: Port configuration for VxComm software. Note, the SolarSIM-GUV supports only the ASCII RS-485 communication mode.

4.3 Datalogger

The connectivity with a datalogger is similar to the SolarSIM-GUV's integration with the SOE converter. The SolarSIM-GUV communication cable is connected to the corresponding datalogger inputs as per Section 4.2. The datalogger must have a spare RS-485 port.

5 SolarSIM-GUV DAQ Application

The SolarSIM-GUV DAQ application provides the user with the real-time status of the instrument, performs the data acquisition and storage of data, and displays daily data plots for various parameters. The SolarSIM-GUV DAQ software communicates via a serial port and thus can be used with either a COMBOX or a SOE converter. This section will go over the software installation, the program settings, and the general know-how for using the SolarSIM-GUV DAQ.

5.1 Software installation

The software installation is performed by executing the setup.exe inside the SolarSIM setup folder located on the provided USB key, as shown in Figure 7. The user should follow the installation instructions as prompted by the software.

5.2 Software settings

Once the SolarSIM-GUV software is installed, the user must define the location-specific geographic settings for the SolarSIM-GUV to work properly. This process can be accomplished in two ways. The first option is for the user to change the values for altitude, longitude, and latitude in the `user_settings.conf` file, located in the `Settings` folder of the installation

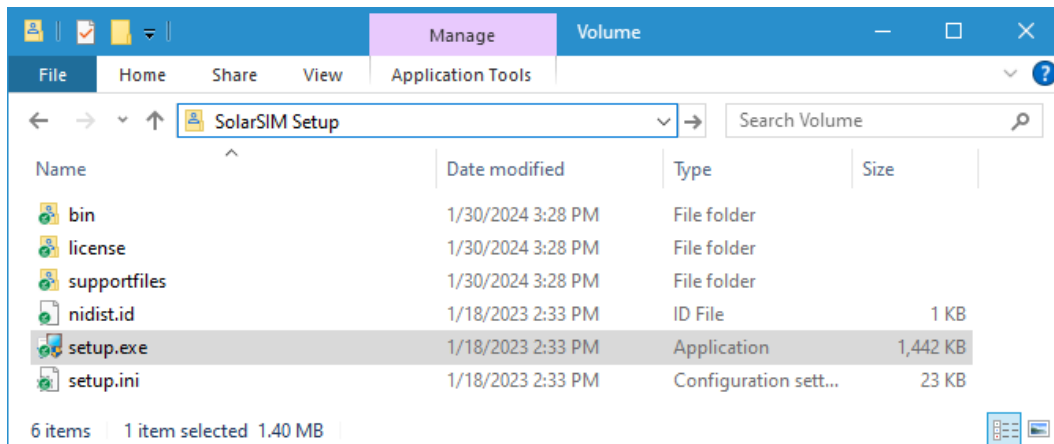


Figure 7: Installation of the SolarSIM-GUV DAQ software

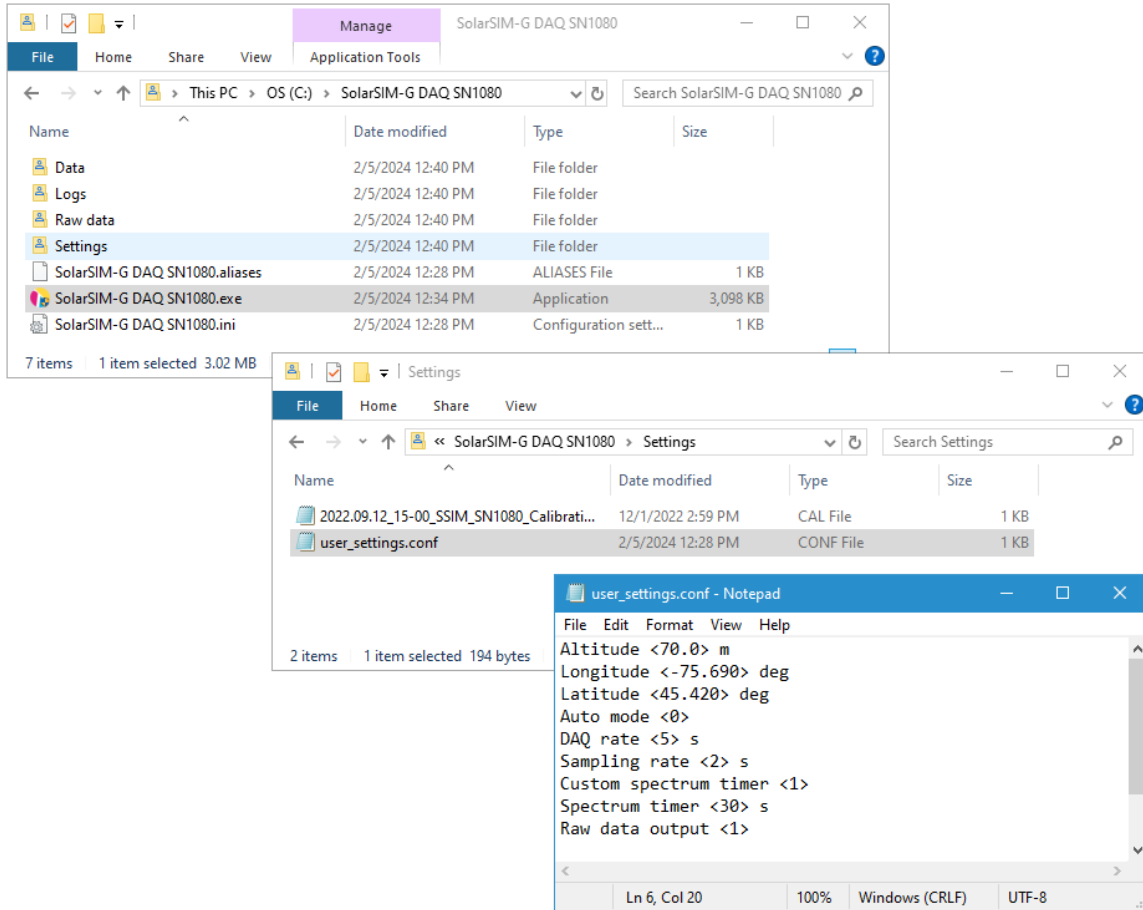


Figure 8: Adjustment of the SolarSIM-GUV DAQ user settings.

directory, as shown in Figure 8. The second option is to modify these parameters when automatically prompted by the software, as will be explained in Section 5.3. The modifications of the remaining parameters is optional. If **Auto mode** is ON, upon launching, the application does not interact with the user and begins the data collection automatically. The **DAQ timer** sets the data acquisition resolution for the entire SolarSIM-GUV data set, while the **Sampling rate** determines how often to poll the measurements over the duration of the DAQ rate. Finally, if the user desires to save the raw data from the instrument, the **Raw data output** setting should be set to ON. Please refer to Table 2 for the summary of the user settings.

5.3 Using the software

The SolarSIM-GUV software is launched by opening the SolarSIM-GUV DAQ SNxxxx.exe in the installation directory, where **xxxx** is a 4-digit serial number of your SolarSIM-GUV. The application runs automatically in the **Administrator mode**, as it is a prerequisite to

Table 2: SolarSIM-GUV DAQ program settings.

Setting	Value range	Units
Altitude	0.0 to 9000.0	metres
Longitude	0.00 to 180.00*	degrees
Latitude	0.00 to 90.00**	degrees
Auto mode	0 or 1	OFF or ON
DAQ rate	1 to 3600	seconds
Sampling rate	1 to 3600	seconds
Custom spectrum timer	N/A	N/A
Spectrum timer	N/A	N/A
Raw data output	0 or 1	OFF or ON

*longitude is negative for western hemisphere

**latitude is negative for southern hemisphere

save the data in the **Program files** directory. Once launched, the program automatically searches for the SolarSIM-GUV calibration file. If the SolarSIM-GUV DAQ detects multiple calibration files, the application will prompt the user to select the serial number of the desired SolarSIM-GUV, as shown in Figure 10.

The SolarSIM-GUV DAQ software then searches for the serial port to which the SolarSIM-GUV is connected. If the SolarSIM-GUV is not detected, the program displays the message as shown in Figure 11 and exits. In this case, please ensure that your PC detects the serial port by viewing the available serial or COM ports in the **Device manager**. If similar problem arises with the SOE converter, please double-check the setup procedure as specified in Section 4.2.

Once the SolarSIM-GUV's serial port is found, the SolarSIM-GUV DAQ prompts the user to verify and/or change the geographic settings, which include altitude, longitude and latitude, as shown in Figure 12. If these parameters are incorrect, the user can change them by modifying the appropriate values in the pop-up window. When ready, press **Apply**, and the program will save these settings permanently by writing them to the `user_settings.conf` file. Please note that the latitude and longitude must be negative for southern and western hemispheres, respectively.

The SolarSIM-GUV DAQ software is depicted in Figure 13. The fully licensed version of the software displays the daily plots of the various irradiances (e.g. broadband, UV-A, UV-B, UV-E, photosynthetically active radiation or PAR), ambient temperature and pressure, internal temperature and humidity, individual SolarSIM-GUV channel voltages, and the elevation angle. Data for plots, other than the ambient temperature and pressure, and internal temperature and humidity, is displayed between the sunrise and the sunset.

The desired DAQ rate (left of the **Start DAQ** button) should be set before beginning the data acquisition. It has a default value of 5 s, but it can be changed by modifying the

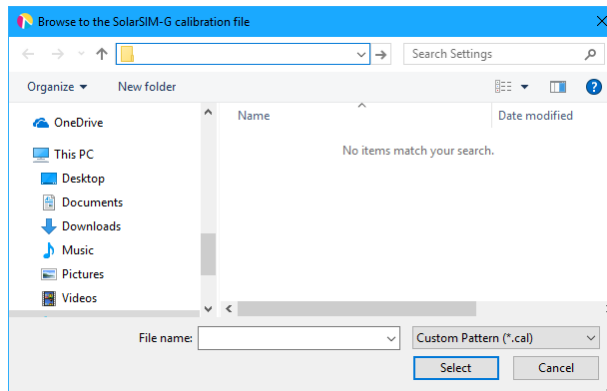


Figure 9: Browsing to the calibration file.

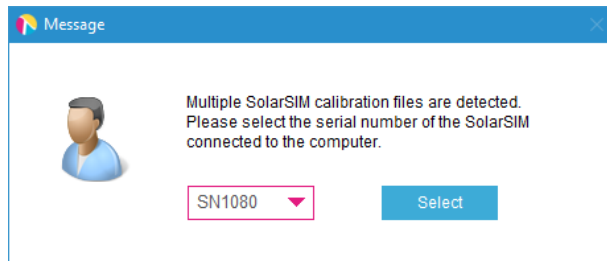


Figure 10: Selecting multiple calibration files.



Figure 11: Failing to detect the SolarSIM-GUV.

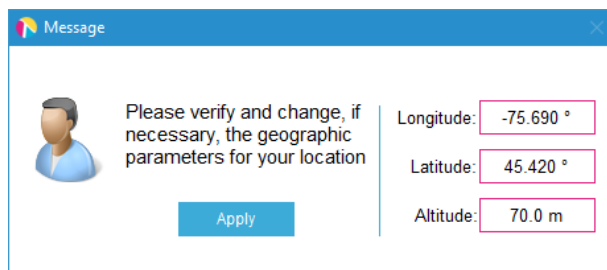


Figure 12: Changing and verifying geographic settings.

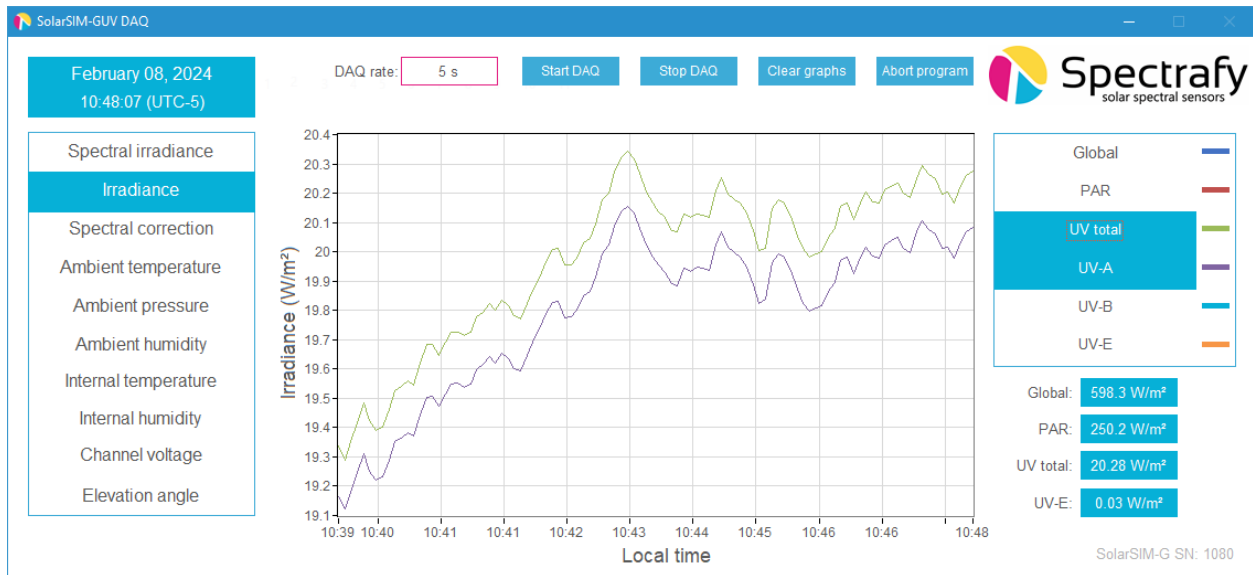


Figure 13: SolarSIM-GUV DAQ application

`user_settings.conf` file. The DAQ timer value can be set between 1 s and 3600 s. Finally, the user can press the **Start DAQ** button to begin data collection from the SolarSIM-GUV.

5.4 Data type and storage

The SolarSIM-GUV DAQ stores the SolarSIM-GUV's processed data in the **Data** folder, located in the installation directory. The daily summary data files are stored in the **Data** folder. A snippet of the SolarSIM-GUV data file is shown in Figure 14. It contains the values for the elevation and azimuth angles, the ambient temperature, the ambient pressure, the ambient humidity, the internal temperature, the internal humidity, the broadband global irradiance, PAR, UV-A, UV-B, and UV-E.

Additionally, if the user has enabled the **Raw data output** setting, the software saves raw daily data files in the **Raw data** folder. See Section 6.3 for more information on the raw data files.

Timestamp	Time zone (hr)	Elevation (deg)	Azimuth (deg)	Ambient temperature (C)	Ambient pressure (kPa)	Ambient humidity (%)	Internal temperature (C)	Internal humidity (%)	Global irradiance (W/m2)
2024-02-05 12:15:00	-5	28.68	179.535	23.17	101.1	24.1	22.69	5.4	536.47
2024-02-05 12:15:05	-5	28.68	179.558	23.18	101.1	24	22.72	5.4	536.45
2024-02-05 12:15:10	-5	28.68	179.581	23.19	101.1	24	22.74	5.4	536.12
2024-02-05 12:15:15	-5	28.68	179.603	23.21	101.1	24.1	22.79	5.4	536.73
2024-02-05 12:15:20	-5	28.68	179.626	23.22	101.1	24.2	22.8	5.4	536.98
2024-02-05 12:15:25	-5	28.68	179.649	23.24	101.1	24.1	22.82	5.4	536.13
2024-02-05 12:15:30	-5	28.681	179.672	23.25	101.1	24.1	22.86	5.4	535.96
2024-02-05 12:15:35	-5	28.681	179.695	23.27	101.1	24	22.92	5.5	536.56
2024-02-05 12:15:40	-5	28.681	179.717	23.28	101.1	23.9	22.94	5.4	536.09
2024-02-05 12:15:45	-5	28.681	179.74	23.29	101.1	24	22.96	5.4	535.89
2024-02-05 12:15:50	-5	28.681	179.763	23.31	101.1	24	22.98	5.4	535.94
2024-02-05 12:15:55	-5	28.681	179.786	23.32	101.1	24	23.03	5.4	535.1



Global irradiance (W/m2)	PAR (W/m2)	UV total (W/m2)	UV-A (W/m2)	UV-B (W/m2)	UV-E (W/m2)
536.47	220.79	18.515	18.321	0.235	0.028
536.45	220.815	18.493	18.304	0.229	0.027
536.12	220.673	18.492	18.303	0.229	0.027
536.73	220.926	18.529	18.338	0.231	0.028
536.98	220.988	18.502	18.312	0.229	0.027
536.13	220.57	18.488	18.298	0.23	0.027
535.96	220.482	18.49	18.299	0.231	0.028
536.56	220.914	18.496	18.304	0.232	0.028
536.09	220.454	18.505	18.313	0.232	0.028
535.89	220.509	18.542	18.345	0.238	0.028
535.94	220.118	18.503	18.312	0.232	0.028
535.1	220.144	18.469	18.283	0.226	0.027

Figure 14: SolarSIM-GUV daily summary file snippet.

5.5 Changing default language for non-Unicode characters

For users of computers with non-Latin based languages, such as Mandarin, the SolarSIM-GUV DAQ may improperly display non-Unicode characters. To solve this problem, the user must change the default language for non-Unicode programs to English. To do so, first locate the Clock, Language, and Region settings in the Control Panel, then click on Region settings, as show in Figure 15. Then navigate to the Administrative tab and select Change system locale..., as demonstrated in Figure 16. Lastly, change the language to English from the drop down menu, as shown in Figure 17, and press OK.

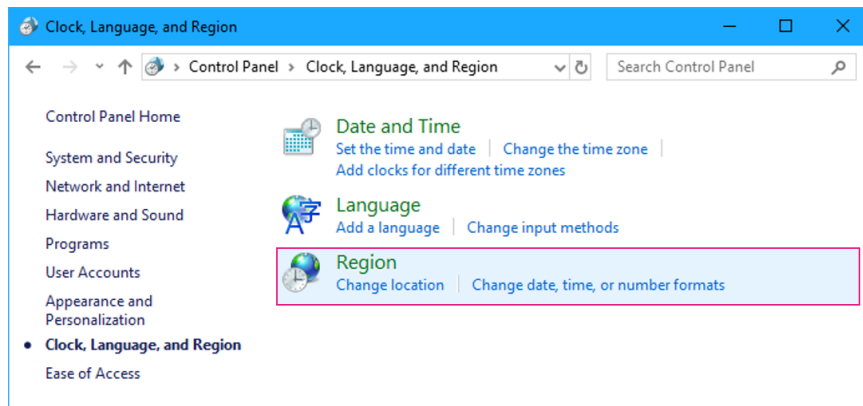


Figure 15: Clock, Language, and Region settings in the Control Panel.

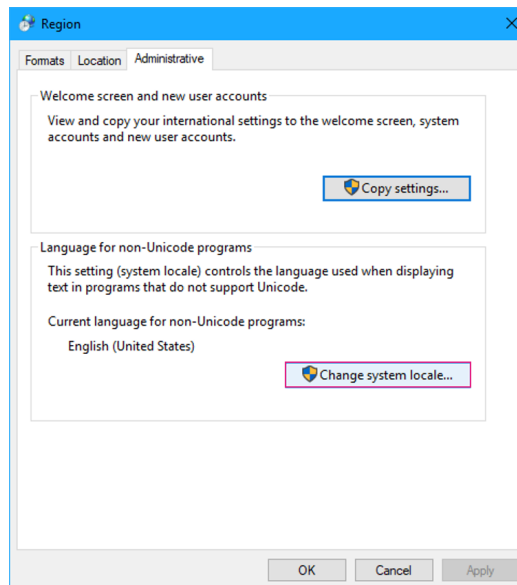


Figure 16: Changing the system locale in the Administrative tab of the Region settings.

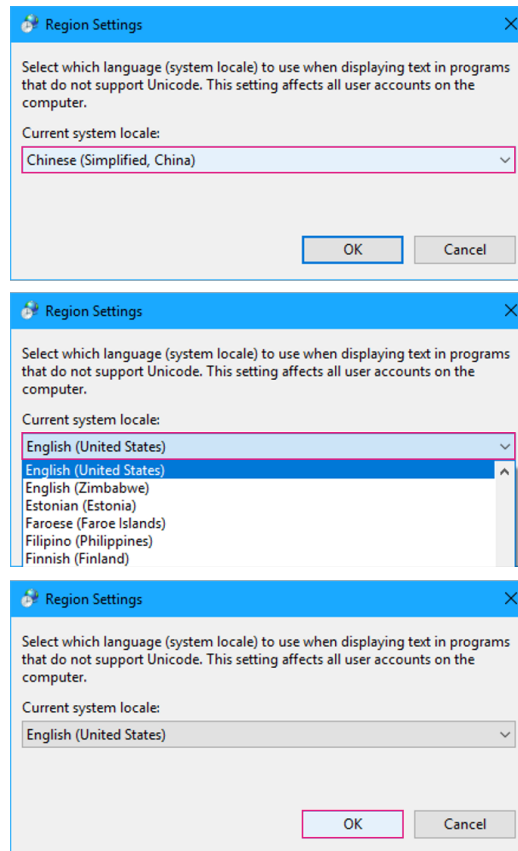


Figure 17: Changing the default language for non-Unicode characters..

6 Datalogger setup

The SolarSIM-GUV can be interfaced with any datalogger, provided the latter has the RS-485 functionality. However, compared to other SolarSIM-GUV connectivity options, this approach is slightly more involved. In a nutshell, the user must execute the following steps to process the data from the SolarSIM-GUV:

1. Setup the serial communication between the datalogger and the SolarSIM-GUV.
2. Send the serial command from the datalogger to the SolarSIM-GUV.
3. Retrieve the raw data from the datalogger.
4. Format the raw data into a specific format.
5. Place the formatted raw data files into the SolarSG software's directory and run the application.

This section discusses in detail how to proceed with each step, including the serial port configuration, sending and parsing the serial command, formatting the SolarSIM-GUV raw data into a required format, and how to use the SolarSG software.

6.1 Serial port configuration

Prior to configuring the serial port on a datalogger, the user must wire the SolarSIM-GUV by following instructions from Section 4.2. The serial port is then configured with standard serial parameters as per Table 3.

6.2 Serial commands

There is only one serial command that one needs to use to acquire the SolarSIM-GUV data:

`Nxxxx_E`

where `xxxx` corresponds to the 4-digit serial number of the SolarSIM-GUV. In return, the SolarSIM-GUV sends an ASCII string with the ambient temperature, ambient pressure, ambient humidity, internal temperature, internal humidity, and nine voltages from the photodiodes.

Table 3: SolarSIM-GUV serial port configuration.

Parameter	Value
Baud rate	9600
Parity	None
Data bits	8
Stop bits	1

The following ASCII string is a sample output:

```
N1010_2500.000,1013.120,4750.000,2600.000,1050.000,2500.032,4999.999,
0000.001,1274.004,2746.321,3291.214, 3924.385,1900.500,0500.123/r/n
```

The aforementioned string can be parsed as:

N“serial number”_“($T_{\text{out}} + 50$) \times 75”, “ $P_{\text{out}} \times 10$ ”, “ $H_{\text{out}} \times 100$ ”, “($T_{\text{in}} + 50$) \times 75”, “ $H_{\text{in}} \times 100$ ”, “ V_1 ”, “ V_2 ”, “ V_3 ”, “ V_4 ”, “ V_5 ”, “ V_6 ”, “ V_7 ”, “ V_8 ”, “ V_9 ”, “end of line character”

where T_{out} , P_{out} , H_{out} , T_{in} , H_{in} , and V_{1-9} are the ambient temperature, the ambient pressure, the ambient humidity, the internal temperature, the internal humidity, and the nine voltages from the detectors, respectively. The aforementioned example string is parsed in Table 4.

Table 4: Processed output example for Nxxxx_E command.

Parameter	Symbol	Value	Units
Ambient temperature	T_{out}	-16.67	$^{\circ}\text{C}$
Ambient pressure	P_{out}	101.312	kPa
Ambient humidity	H_{out}	47.50	%
Internal temperature	T_{in}	-15.33	$^{\circ}\text{C}$
Internal humidity	H_{in}	10.50	%
Voltage channel 1	V_1	2500.032	mV
Voltage channel 2	V_2	4999.999	mV
Voltage channel 3	V_3	0.001	mV
Voltage channel 4	V_4	1274.004	mV
Voltage channel 5	V_5	2746.321	mV
Voltage channel 6	V_6	3291.214	mV
Voltage channel 7	V_7	3924.385	mV
Voltage channel 8	V_8	1900.500	mV
Voltage channel 9	V_9	500.123	mV

6.3 Raw data file format

The SolarSG software requires a .csv file in a specific format based on the SolarSIM-GUV raw data output. The file must have the following headings with the corresponding data: Timestamp, Time zone (hr), Ambient pressure (kPa), Ambient temperature (C), Ambient humidity (%), Internal temperature (C), Internal humidity (%), V1 (mV), V2 (mV), V3 (mV), V4 (mV), V5 (mV), V6 (mV), V7 (mV), V8 (mV), and V9 (mV). Each data row must consist of comma separated values only, with no spaces in between. The timestamp must be strictly in the yyyy-mm-dd HH:MM:SS format, where yyyy, mm, dd, HH, MM, and SS is the year, month, day, hour, minute, and second, respectively. The SolarSG software uses the time stamp and the timezone from the raw data file to determine the UTC time, which is necessary for the solar position algorithm. Therefore, the user must ensure that each time stamp plus the timezone corresponds to the UTC time. The snippet of the raw data file is presented in Figure 18. The raw data file must be named as yyyy-mm-dd_SSIM_Raw_Data_SNxxxx.csv, where yyyy, mm, dd correspond to the year, month, and day when the raw SolarSIM-GUV data was generated, while xxxx is a 4-digit serial number of your SolarSIM-GUV.

Timestamp	Timezone (hr)	Ambient temperature (C)	Ambient pressure (kPa)	Ambient humidity (%)	Internal temperature (C)	Internal humidity (%)
2024-02-05 12:15:00	-5	23.17	101.10	24.1	22.69	5.4
2024-02-05 12:15:05	-5	23.18	101.1	24	22.72	5.4
2024-02-05 12:15:10	-5	23.19	101.1	24	22.74	5.4
2024-02-05 12:15:15	-5	23.21	101.1	24.1	22.79	5.4
2024-02-05 12:15:20	-5	23.22	101.1	24.2	22.8	5.4
2024-02-05 12:15:25	-5	23.24	101.1	24.1	22.82	5.4
2024-02-05 12:15:30	-5	23.25	101.1	24.1	22.86	5.4
2024-02-05 12:15:35	-5	23.27	101.1	24	22.92	5.5
2024-02-05 12:15:40	-5	23.28	101.1	23.9	22.94	5.4
2024-02-05 12:15:45	-5	23.29	101.1	24	22.96	5.4
2024-02-05 12:15:50	-5	23.31	101.1	24	22.98	5.4
2024-02-05 12:15:55	-5	23.32	101.1	24	23.03	5.4



CH1 (mV)	CH2 (mV)	CH3 (mV)	CH4 (mV)	CH5 (mV)	CH6 (mV)	CH7 (mV)	CH8 (mV)	CH9 (mV)
656.27	861.197	915.651	1037.778	1390.468	1154.396	1343.071	1547.116	211.009
656.009	860.349	915.761	1037.208	1392.791	1154.443	1342.699	1548.676	210.887
656.002	860.242	915.43	1036.219	1391.239	1154.385	1342.167	1546.346	210.695
657.288	861.401	914.932	1038.341	1395.028	1154.814	1342.388	1547.544	211.063
656.233	861.652	916.606	1037.799	1393.237	1155.562	1344.624	1546.449	211.262
655.884	859.078	914.017	1036.538	1392.559	1152.631	1343.128	1546.665	211.023
655.69	859.883	914.376	1035.788	1389.433	1155.024	1343.137	1544.223	210.741
655.855	859.558	915.594	1038.964	1394.204	1154.803	1342.261	1546.942	210.939
656.316	859.488	913.391	1036.235	1390.827	1154.048	1342.24	1549.112	211.123
657.092	860.481	913.963	1037.159	1388.31	1151.47	1341.874	1546.426	211.095
656.342	858.749	911.698	1034.531	1388.856	1155.598	1342.831	1547.023	211.335
655.531	858.664	912.759	1033.331	1389.235	1151.222	1335.589	1544.627	211.001

Figure 18: SolarSIM-GUV raw data file snippet.

6.4 SolarSG application

The SolarSG application is an executable that the user must run to process the raw data from the SolarSIM-GUV into the spectral data. This software is located on the provided USB key inside a folder with contents as per Figure 19, which initially include:

1. atmParam.data
2. SolarSG.exe
3. SSIM_Calibration_SNxxxx.json
4. user_settings.ini

Please note, the calibration file for the SolarSG application is in a .json format, in contrast to the .cal file format used by the SolarSIM-GUV DAQ. Prior to running the SolarSG application the user must configure the local geographic settings in the user_settings.ini file, by modifying the altitude, longitude, and latitude, corresponding to the location of your SolarSIM-GUV, as shown in Figure 19. Please refer to Table 2 for the allowed ranges and the positive/negative convention of these parameters. Finally, place the raw data .csv file(s) formatted as per Section 6.3 in the SolarSG directory and launch the application.

Once launched, the SolarSG application scans the directory for new raw data files. If raw data files are found, the software processes each file line-by-line. The SolarSG application creates Processed Data\\Global folder, where one can find daily summary files and spectra folders containing the identical data that SolarSIM-GUV DAQ generates as explained in Section 5.4. The archive folder contains all processed raw data files. For more detailed use of the SolarSG application, please refer to the Appendix section.

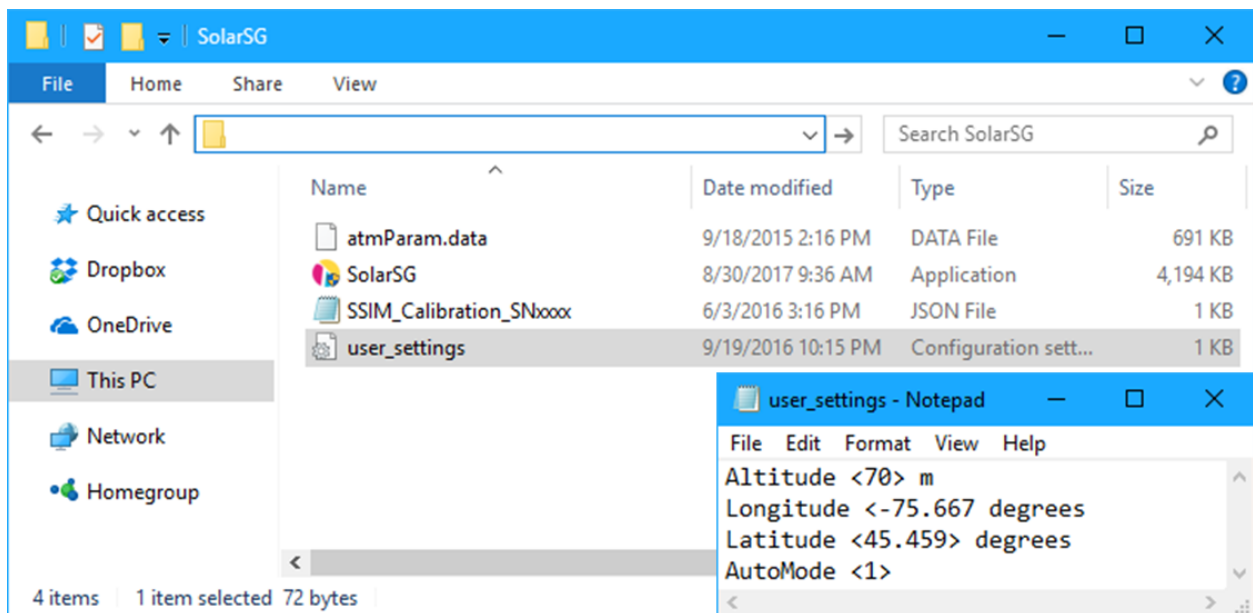


Figure 19: Modifying geographic settings for the SolarSG application.

Appendix: Using the SolarSG Application

1. Introduction

The SolarSG application has two functions:

- 1) To process **batches of SolarSIM raw data .csv files**. The processed data is output and stored as daily summary files and per-timestamp spectral files.
- 2) To process **raw data for a single timestamp** using a command line or equivalent interface. The daily summary data is returned as a standard output (SDTOUT) and the spectral data file is stored in the file path defined by the user.

2. Processing batches of raw data files

1. Create a folder (e.g. SolarSG) and place the SolarSG executable, **SSIM_calibration_SNxxx**, **atmParam.data**, and **user_settings** files in it:

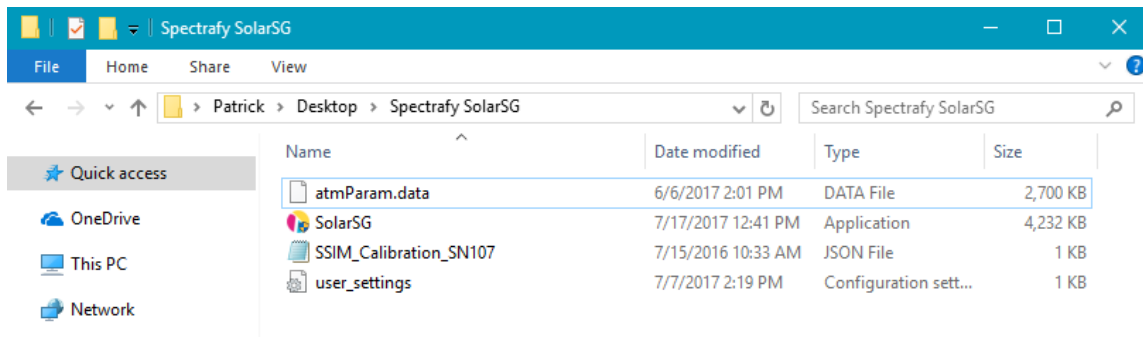


Fig. 1 SolarSG folder showing SolarSG executable, SSIM_Calibration_SNxxx, atmParam.data and user_settings files are all present.

2. Open the **user_settings.ini** file in a text editor and set the AutoMode to 1(on) or 0(off). With the AutoMode off you will be prompted to validate the user settings each time the SolarSG runs.

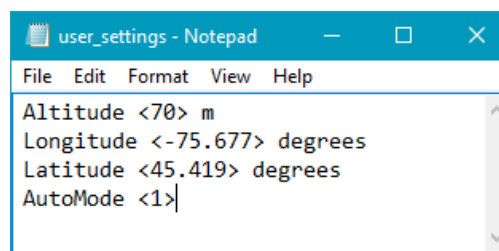


Fig. 2. user_settings file showing altitude, longitude and latitude of the SolarSIM location and Automode set to 1(on).

3. If you are already working with the SolarSIM raw data .csv files, skip to Step 4. Otherwise, format your SolarSIM raw data into daily .csv files with the following format:
 - a. **SolarSIM-D2**
Filename format: **yyyy-mm-dd_SSIM_Raw_Data_SNxxx.csv**

Raw data columns: Timestamp, Time zone (hr), Ambient temperature (C), Ambient pressure (kPa), Internal temperature (C), Internal humidity (%), V1 (mV), V2 (mV), V3 (mV), V4 (mV), V5 (mV), V6 (mV)

b. SolarSIM-G

Filename format: **yyyy-mm-dd_SSIM_Raw_Data_SNxxxx.csv**

Raw data columns: Timestamp, Time zone (hr), Ambient temperature (C), Ambient pressure (kPa), Ambient humidity (%), Internal temperature (C), Internal humidity (%), V1 (mV), V2 (mV), V3 (mV), V4 (mV), V5 (mV), V6 (mV), V7 (mV), V8 (mV), V9 (mV)

Further details regarding how to format raw data files can be found in Section 6.2 of the SolarSIM-D2 and SolarSIM-G User manuals.

4. Place the raw data file(s) in the SolarSG Folder (one or many raw data files can be placed in the Operating folder for processing at the same time.

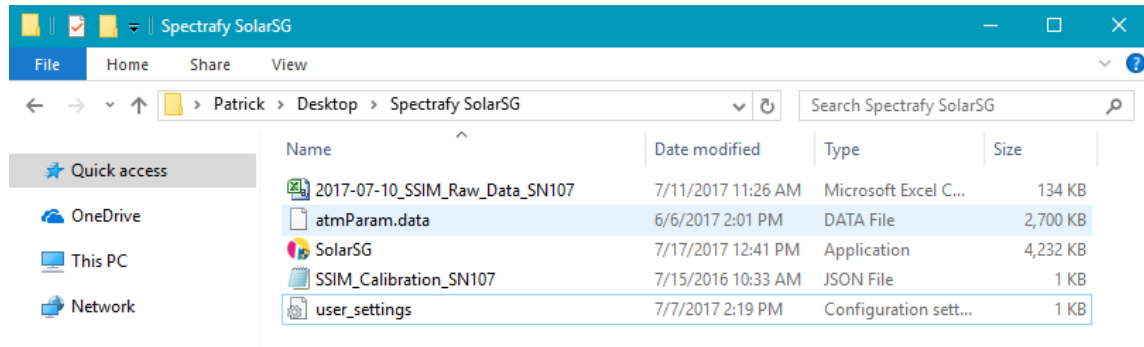


Fig. 3. Operating folder showing the rata data file present.

5. Double-click the SolarSG application – it will start processing the raw data.
6. Processed data will be stored in the folder “-\Processed Data\Direct” or “-\Processed Data\Global” within the SolarSG Folder for the SolarSIM-D2 or SolarSIM-G, respectively.
 - a. If nothing happens, check the error logs to make sure everything is set up properly.

3. Processing raw data for a single timestamp

1. Create a folder (SolarSG) and place the SolarSG executable, `SSIM_calibration_SNxxx`, `atmParam.data`, and `user_settings` files in it

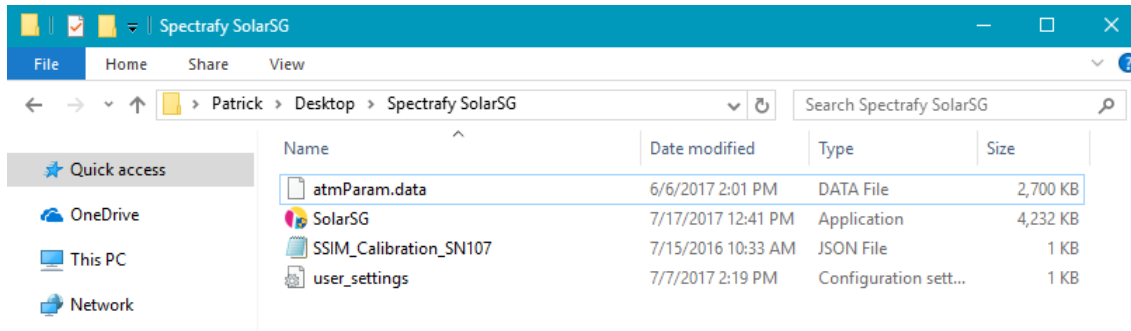


Fig. 4. SolarSG folder showing SolarSG executable, `SSIM_Calibration_SNxxx`, `atmParam.data` and `user_settings` files are all present.

2. Open the `user_settings.ini` file in a text editor and make sure the `AutoMode` parameter is set to 1.

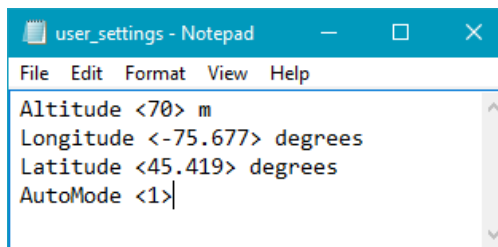


Fig. 5. `user_settings` file showing altitude, longitude and latitude of the SolarSIM location and Automode set to 1(on).

3. Call the `SolarSG.exe` from command prompt or equivalent according to the following examples:

a. SolarSIM-D2

- i. Command line input to generate processed data *with* a spectrum:

```
~/ SolarSG.exe d "yyy-mm-dd hh:mm:ss,
timezone,ambient_pressure,ambient_temperature,internal_temperature,internal_humidity,
V1,V2,V3,V4,V5,V6,C:\filepath\to\spectrum.csv,C:\filepath\to\calibration_file.json"
```

- ii. Command line input to generate processed data *without* a spectrum:

```
~/ SolarSG.exe d " yyy-mm-dd hh:mm:ss,
timezone,ambient_pressure,ambient_temperature,internal_temperature,internal_humidity,
V1,V2,V3,V4,V5,V6,-1,C:\filepath\to\calibration_file.json"
```

SolarSIM-D2 output data string format:

```
“yyyy-mm-dd hh:mm:ss,timezone,elevation,azimuth,ambient_temperature,ambient_pressure,  
internal_temperature,DNI,Ozone,PWV,AOD 368nm,AOD 412nm,AOD 500nm,AOD 675nm,AOD 862nm,AOD  
1024nm,I1,I2,I3,I4,I5,I6”
```

b. SolarSIM-G

- i. Command line input to generate processed data *with* a spectrum:

```
~/ SolarSG.exe g “yyyy-mm-dd hh:mm:ss,  
timezone,ambient_temperature,ambient_pressure,ambient_humidity,internal_temperature,  
internal_humidity,V1,V2,V3,V4,V5,V6,V7,V8,V9,C:\filepath\to\spectrum.csv,C:\filepath\to\calibr  
ation_file.json”
```

- ii. Command line input to generate processed data *without* a spectrum:

```
~/ SolarSG.exe g “yyyy-mm-dd hh:mm:ss,  
timezone,ambient_temperature,ambient_pressure,ambient_humidity,internal_temperature,  
internal_humidity,V1,V2,V3,V4,V5,V6,V7,V8,V9,-1,C:\filepath\to\calibration_file.json”
```

SolarSIM-G output data string format:

```
“yyyy-mm-dd hh:mm:ss,timezone,elevation,azimuth,ambient_temperature,ambient_pressure,  
ambient_humidity,internal_temperature,internal_humidity,GHI”
```

SolarSIM-G output data string format with precipitable water vapour (PWV) upgrade:

```
“yyyy-mm-dd hh:mm:ss,timezone,elevation,azimuth,ambient_temperature,ambient_pressure,  
ambient_humidity,internal_temperature,internal_humidity,GHI,PWV”
```

Note, the PWV value is reported in mm.